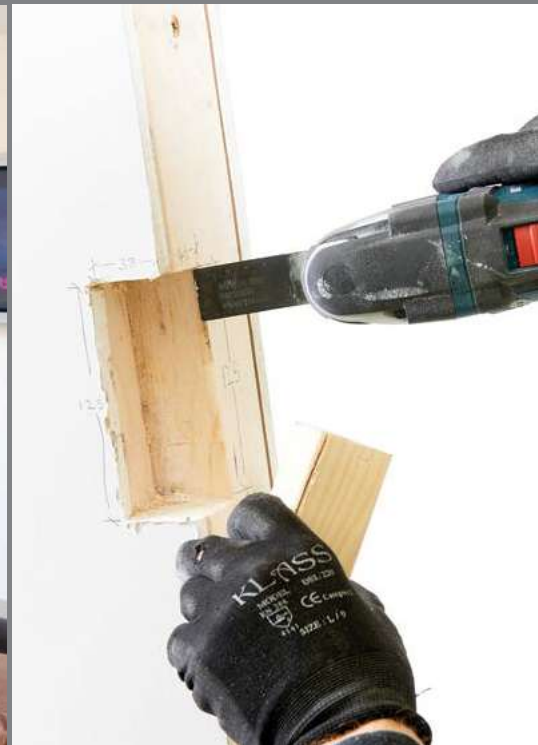


# Arriva

## Wall construction preparation



# EZY-Jamb Arriva wall construction preparation

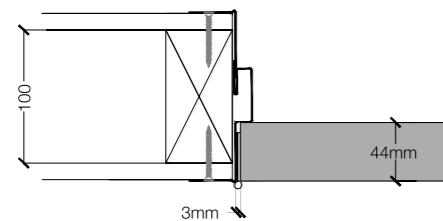
## > STUDWORK WALL CONSTRUCTION

The EZY-Jamb systems are ideally suited for use on studwork partitions of either steel or timber studwork.

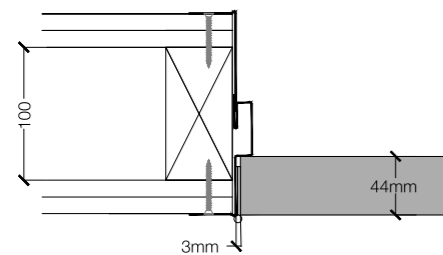
## > BUTT HINGES

> Timber stud partitioning

- SPEC 1:  
- Single stud  
- Single skin plasterboard  
- Butt hinge

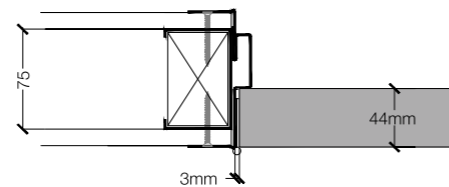


- SPEC 2:  
- Single stud  
- Double skin plasterboard  
- Butt hinge

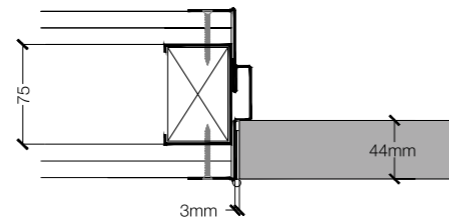


> Steel stud partitioning

- SPEC 1:  
- Single stud  
- Timber stud insert  
- Single skin plasterboard  
- Butt hinge



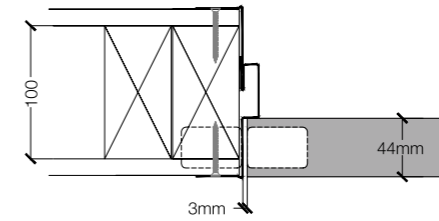
- SPEC 2:  
- Single stud  
- Timber stud insert  
- Double skin plasterboard  
- Butt hinge



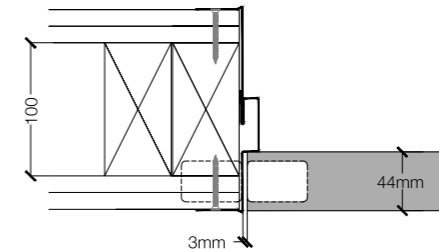
## > CONCEALED HINGES

> Timber stud partitioning

- SPEC 1:  
- Double stud  
- Single skin plasterboard  
- SOSS hinge

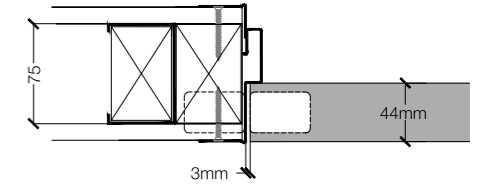


- SPEC 2:  
- Double stud  
- Double skin plasterboard  
- SOSS hinge

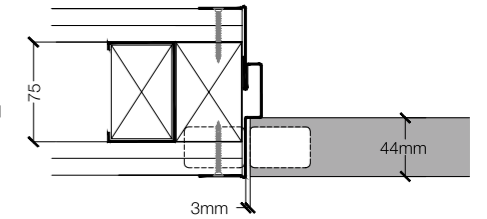


> Steel stud partitioning

- SPEC 1:  
- Double stud  
- Timber stud inserts  
- Single skin plasterboard  
- SOSS hinge

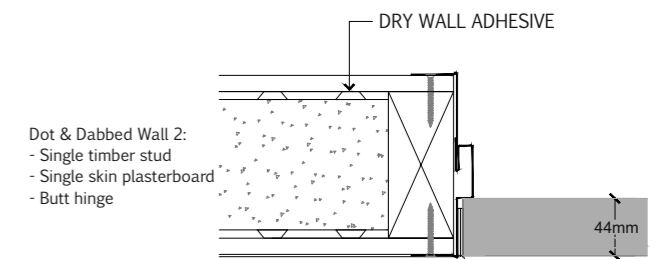
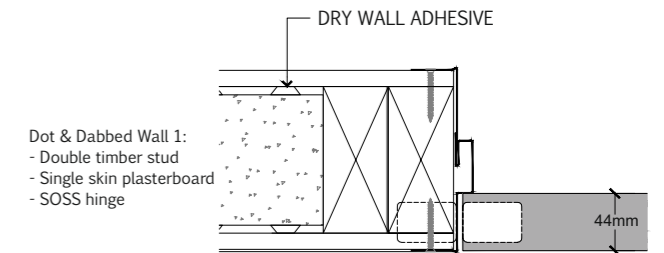


- SPEC 2:  
- Double stud  
- Timber stud inserts  
- Double skin plasterboard  
- SOSS hinge



## > MASONRY WALL CONSTRUCTION

If EZY-Jamb is being used on a masonry wall then a timber stud is required within the opening. Once this has been fitted, the wall can be clad with plasterboard using the dot & dab method by fixing the plasterboard to the wall with drywall adhesive, or by battening out the wall using steel or timber batten/furring. This allows the EZY-Jamb frame to be installed in the standard way.



### Important - When using an overhead concealed closer

If an overhead concealed closer is being used then a double stud is required at the head also. Ensure the lower stud is timber to allow the closer channel to be installed easily.

# Using EZY-Jamb butt hinges



## > STEP 1 Stud construction

Construct your stud partition in the standard way. **If using steel stud then a timber insert is required within the stud of at least 45mm depth.**

### Important

The joint in the plasterboard must not be in line with the jambs, but must meet centrally over the opening as shown in the pictures below.

## > STEP 2 Openings

When forming the actual opening, ensure you are working to the correct structural opening size provided on the EZY-Jamb door schedule.

Ensure the opening is square and level and the wall is plumb.



# Using SOSS concealed hinges



## > STEP 1 Stud construction

Construct your stud partition with a double stud on the hinge side. This is to provide extra strength due to the notching required for the SOSS hinges.

### Important

When using a partition made from steel studs, ensure that the final stud is a timber stud. This will make the notching process for the concealed hinges a vastly simpler process.



> **STEP 2** Openings

When forming the actual opening, ensure you are working to the correct structural opening size provided on the EZY-Jamb door schedule.

Ensure the opening is square and level and the wall is plumb.

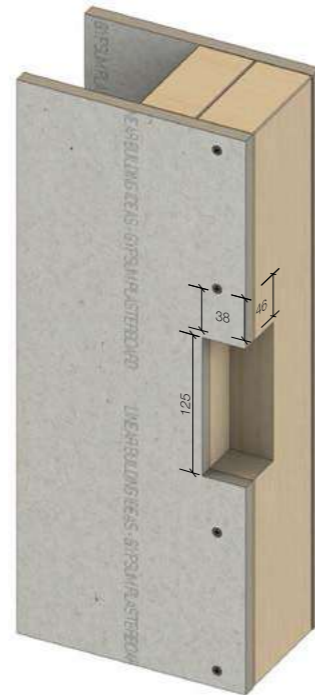


Using the SOSS notch template, line the slot in the template up with the lines you have made on the stud and draw around the template. This gives you the exact size of the notch required.



> **STEP 3** Notch partition for hinges

The hinge stud needs to be notched to accommodate each bracket and hinge.



The recommended tool for cutting the notch is the multi purpose saw. This is available for hire or purchase from Linear. Further details are at the back of the booklet.



Offer the hinge jamb up to the stud and mark a line at the top of the hinge in all the hinge brackets.



# Using ROC-York adjustable concealed hinges



## > STEP 1 Stud construction

Construct your stud partition with a double stud on the hinge side. This is to provide extra strength due to the notching required for the ROC-York hinges.

### Important

When using a partition made from steel studs, ensure that the final stud is a timber stud. This will make the notching process for the concealed hinges a vastly simpler process.



## > STEP 2 Openings

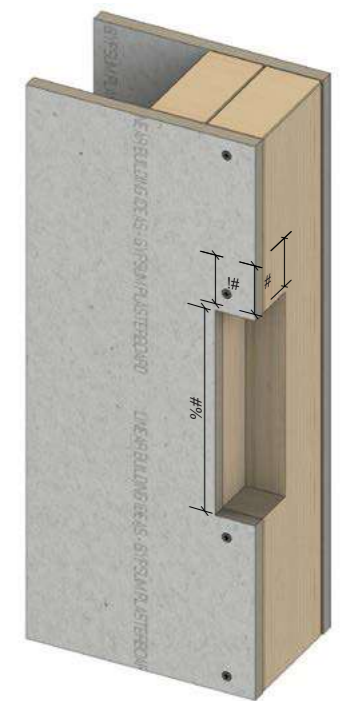
When forming the actual opening, ensure you are working to the correct structural opening size provided on the EZY-Jamb door schedule.

Ensure the opening is square and level and the wall is plumb.

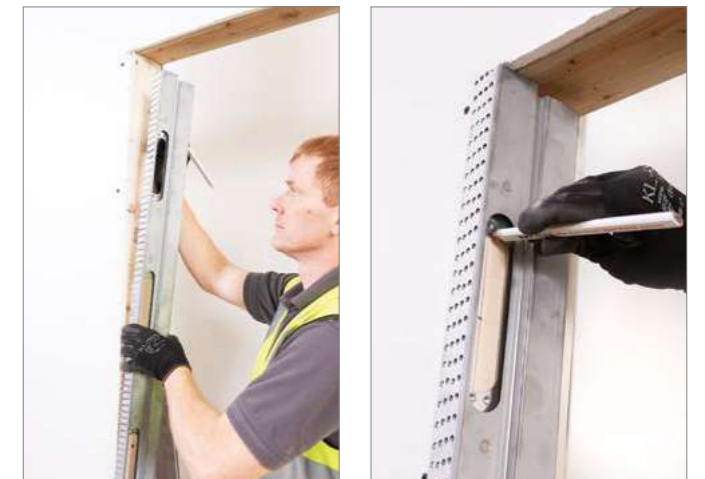


## > STEP 3 Notch partition for hinges

The hinge stud needs to be notched to accommodate each bracket and hinge.



Offer the hinge jamb up to the stud and mark a line at the top of the hinge in all the hinge brackets.



Using the ROC-York notch template, line the slot in the template up with the lines you have made on the stud and draw around the template. This gives you the exact size of the notch required.



The recommended tool for cutting the notch is the multi purpose saw. This is available for hire or purchase from Linear. Further details are at the back of the booklet.



# Multi purpose saw

## > MULTI-TOOL

The recommended tool for cutting in the notches is the multi purpose saw. This can be hired or purchased from Linear.

### Purchase

£185.00 + VAT

Includes the Bosch multi-tool and x2 blades.

### Hire

First week £50.00 + VAT

Includes delivery and collection plus x1 blade.

£15.00 + VAT per week thereafter.

### Additional blades

£14.00 + VAT

x1 standard multi purpose blade for timber and metal.

For more information speak to our advisors today:

0113 245 9559



> Bosch multi-tool





Architectural Hardware



Door Solutions



Access Solutions



Wathroom Solutions

**Leeds Office**

Forge House  
42-44 Burley Road  
Leeds  
LS3 1JX  
T: 0113 245 9559  
F: 0113 245 9779

**Ashford Office**

Ground Floor, Unit 4  
Highpoint Business  
Village, Ashford  
TN24 8DH  
T: 0123 364 7788  
F: 0123 365 5244

**London Office**

Hamilton House  
Mabledon Place  
Off Euston Road  
London, WC1H 9BB  
T: 0207 099 8299  
F: 0207 099 9351

**Sheffield Office**

Suite 168  
49 Eldon Street  
Sheffield  
S1 4NR  
T: 0114 345 0235  
F: 0114 345 0236

